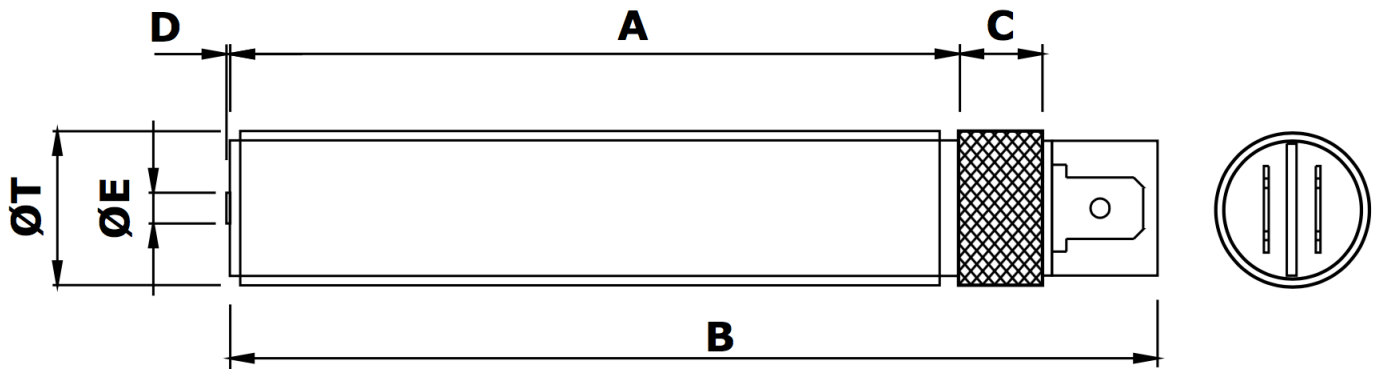


MPU5676 Magnetic Pickup



Mechanical specification

dimensions in mm unless otherwise stated

<i>Dimension</i>		<i>Part number</i>
A	76	
B	97	
C	9 medium diamond knurl	
D	0.4 nominal	
ØE	Ø3.17 Pole Piece	
ØT	5/8" x 18 tpi UNF-2A	MPU5676-I*
or	M16 x 1.5 6g	MPU5676-M*
Main body material	Stainless Steel	
End Bobbin face	Glass Filled Nylon or Polypropylene	
Locknut	1 off supplied as standard	

mpu5676 full v1.2 01/2020

*Previous code MPU1503-I / MPU1503-M

Electrical specification

Resistance 350 ohms nominal @ 20°C

Inductance 150mH nominal

Operating temperature range -40°C to +120°C

Voltage output 20V peak-peak [see note 1]

Minimum speed 30mm/second [see note 2]

Termination 2 x 1/4" Push-on blade terminal

Mating connector 2 x 1/4" Push-on blade receptacle

Notes:

1. Nominal output is a typical peak to peak voltage measured across a 10K load using a 60 tooth mild steel gear wheel of Ø6", rotating at 1000 rpm and with an air gap setting of 0.01".
2. Minimum speed in mm/second to generate 100mV peak to peak typical output under standard test conditions as in note 1.

Reliability, Guaranteed



Logitech Electronics Limited

MADE IN THE UK

mpu5676 full v1.2 01/2020

sensorMATIC
SPECIALIST&SOLUTIONS

Sensormatic srl - Via della Beverara 13 - 40131 Bologna - Italia
Tel. +39 051 63 53 511 - smbox@sensormatic.it - www.sensormatic.it