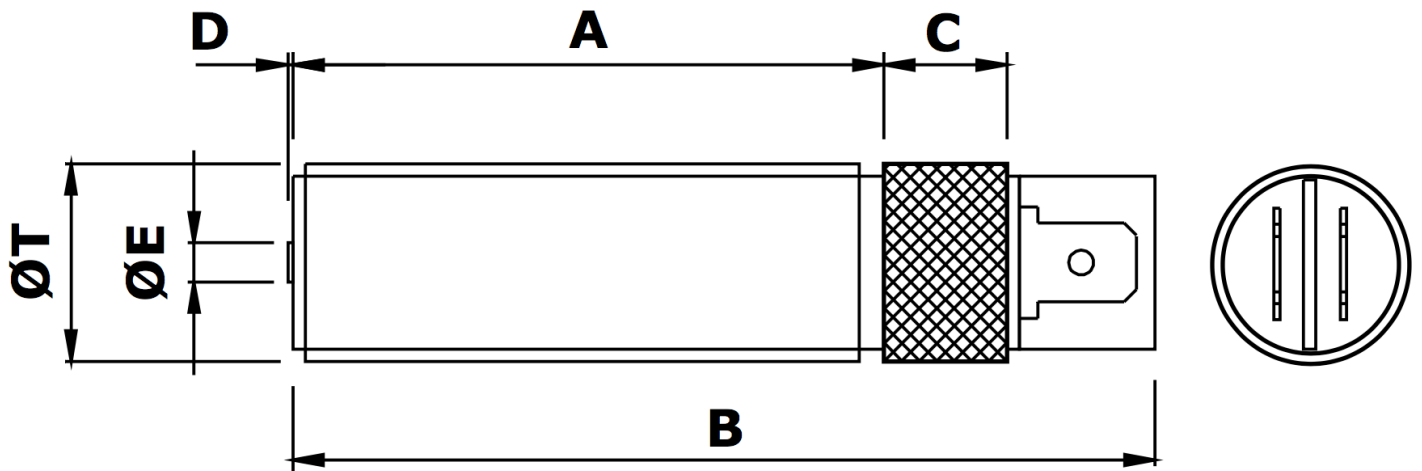


Blade Connector Type  
 Higher Output  
 Speed Sensor  
 Special Build for Flowmeters

# MPU5648H Magnetic Pickup



## Mechanical specification

dimensions in mm unless otherwise stated

<i>Dimension</i>		<i>Part number</i>
<b>A</b>	48	
<b>B</b>	70	
<b>C</b>	10 medium diamond knurl	
<b>D</b>	0.4 nominal	
<b>ØE</b>	Ø3.17 Moveable Pole Piece	
<b>ØT</b>	5/8" x 18 tpi UNF-2A	<b>MPU5648H-I*</b>
<b>or</b>	M16 x 1.5 6g	<b>MPU5648H-M*</b>
<b>Main body material</b>	Stainless Steel	
<b>End Bobbin face</b>	Glass Filled Nylon or Polypropylene	
<b>Locknut</b>	1 off supplied as standard	

mpu5648H full v1.2 01/2020

\*Previous code MPU2548H-I / MPU2548H-M

# Electrical specification

**Resistance** 850Ω nominal @ 20°C

**Inductance** 310mH nominal

**Operating temperature range** -20°C to +120°C

**Voltage output** 30V peak-peak [see notes 1 & 3]

**Minimum speed** 30mm/second [see note 2]

**Termination** 2 x 1/4" push-on blade terminal

**Mating connector** 2 x 1/4" push-on blade receptacle

## Notes:

1. Nominal output is a typical peak to peak voltage measured across a 10K load using a 60 tooth mild steel gear wheel of Ø6", rotating at 1000 rpm and with an air gap setting of 0.01".
2. Minimum speed in mm/second to generate 100mV peak to peak typical output under standard test conditions as in note 1.
3. Enhanced output and special design to provide for inward movement of Pole Piece if pressed end-on. Warning – the moveable pole piece is to reduce the risk of internal damage arising from incorrect installation. MPUs are not to be subjected to ongoing excessive vibration that would be caused by insufficient air gap allowing the rotating gear teeth to collide and cause radial chatter.

*Reliability, Guaranteed*



**Logitech Electronics Limited**

**MADE IN THE UK**

mpu5648H full v1.2 01/2020

**SENSORMATIC**  
SPECIALIST & SOLUTIONS

Sensormatic srl - Via della Beverara 13 - 40131 Bologna - Italia  
Tel. +39 051 63 53 511 - [smbox@sensormatic.it](mailto:smbox@sensormatic.it) - [www.sensormatic.it](http://www.sensormatic.it)