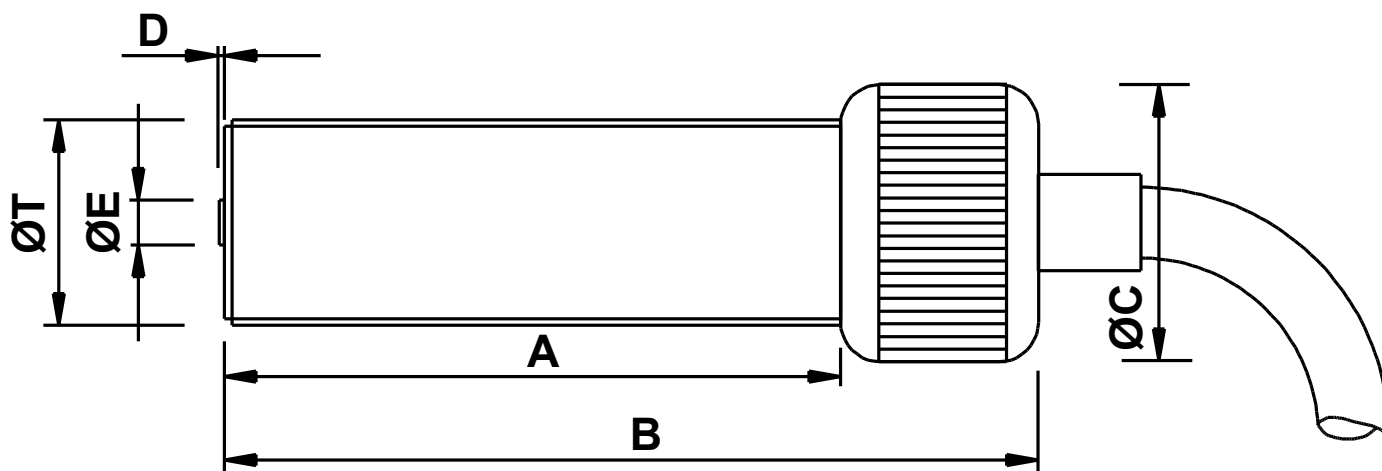


# MPU1648 Magnetic Pickup



## Mechanical specification

dimensions in mm unless otherwise stated

<i>Dimension</i>		<i>Part number</i>
<b>A</b>	48	
<b>B</b>	64	
<b>ØC</b>	Ø22 medium straight knurled cap	
<b>D</b>	0.4 nominal	
<b>ØE</b>	Ø3.17 Pole Piece	
<b>ØT</b>	5/8" x 18 tpi UNF-2A	<b>MPU1648-I*</b>
<b>or</b>	M16 x 1.5 6g	<b>MPU1648-M*</b>
<b>Main body material</b>	Stainless Steel	
<b>End Bobbin face</b>	Glass Filled Nylon or Polypropylene	
<b>Locknut</b>	1 off supplied as standard	

\* Previous code MPU1151-I/3m / MPU1151-M/3m

mpu1648 full v1.2 01/2020

## Electrical specification

**Resistance** 350Ω nominal @ 20°C

**Inductance** 150mH nominal

**Operating temperature range** -10°C to +85°C

**Voltage output** 20V peak-peak [see note 1]

**Minimum speed** 30mm/second [see note 2]

**Termination** 2-core (7/0.2) screened cable x 3 metres

### Notes:

1. Nominal output is a typical peak to peak voltage measured across a 10K load using a 60 tooth mild steel gear wheel of Ø6", rotating at 1000 rpm and with an air gap setting of 0.01".
2. Minimum speed in mm/second to generate 100mV peak to peak typical output under standard test conditions as in note 1

*Reliability, Guaranteed*



**Logitech Electronics Limited**

**MADE IN THE UK**

mpu1648 full v1.2 01/2020

**sensorMATIC**  
SPECIALIST&SOLUTIONS

Sensormatic srl - Via della Beverara 13 - 40131 Bologna  
Tel. +39 051 63 53 511 - smbox@sensormatic.it - www.sensormatic.it