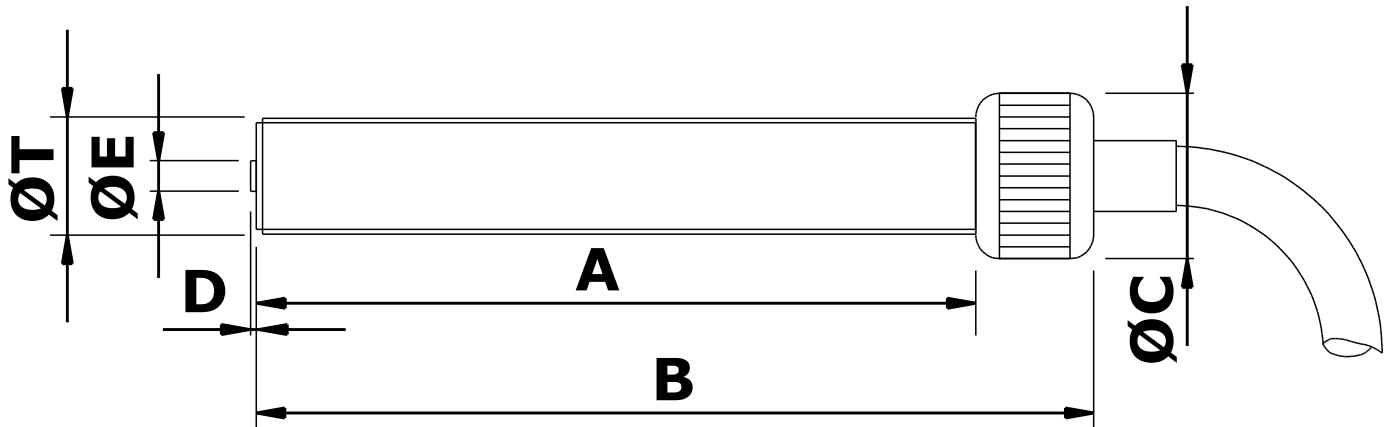


MPU1162TX Magnetic Pickup



Mechanical specification

dimensions in mm unless otherwise stated

<i>Dimension</i>		<i>Part number</i>
A	62	
B	74	
ØC	Ø14 medium straight knurled cap	
D	0.4 nominal	
ØE	Ø2.54 Pole Piece	
ØT	3/8" x 24 tpi UNF-2A	MPU1162TX-I*
or	M10 x 1.0 6g	MPU1162TX-M*
Main body material	Stainless Steel	
End Bobbin face	Glass filled Nylon or Polypropylene	
Locknut	1 off supplied as standard	

* Previous code MPU1102TX-I / MPU1102TX-M

Electrical specification

Resistance 350Ω nominal @ 20°C

Inductance 90mH nominal

Operating temperature range -30°C to +125°C

Voltage output 15V peak-peak [see note 1]

Minimum speed 50mm/second [see note 2]

Termination Type 44 2-core screened cable x 2 metres

Notes:

1. Nominal output is a typical peak to peak voltage measured across a 10K load using a 60 tooth mild steel gear wheel of Ø6", rotating at 1000 rpm and with an air gap setting of 0.01".
2. Minimum speed in mm/second to generate 100mV peak to peak typical output under standard test conditions as in note 1.

Reliability, Guaranteed



Logitech Electronics Limited

MADE IN THE UK

mpu1162TX full v1.2 01/2020

sensorMATIC
SPECIALIST&SOLUTIONS

Sensormatic srl - Via della Beverara 13 - 40131 Bologna - Italia
Tel. +39 051 63 53 511 - smbx@sensormatic.it - www.sensormatic.it