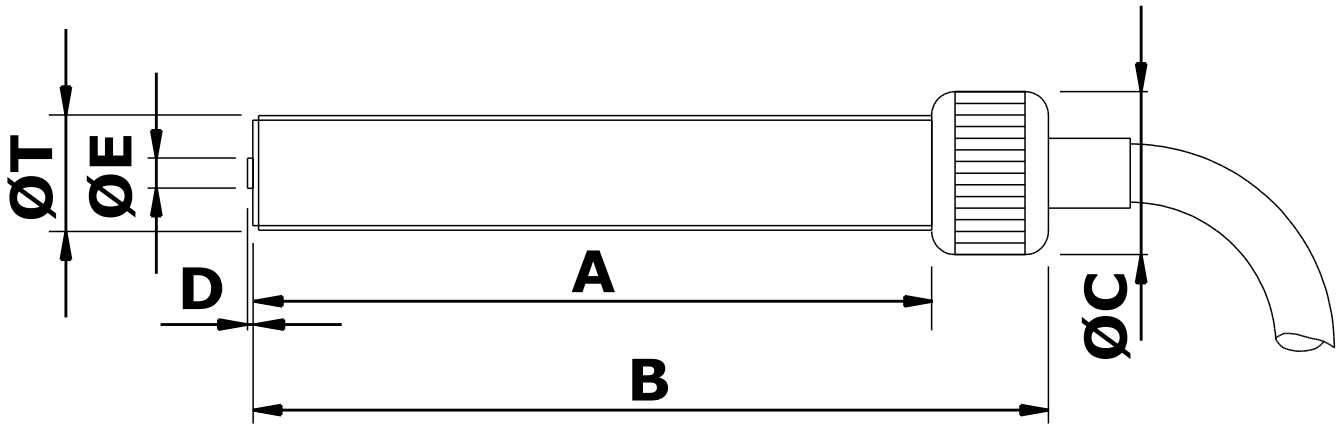


Captive Cable Type  
 Extended Temperature  
 Higher Output  
 Low Halogen  
 Speed Sensor

# MPU1159HTX Magnetic Pickup



## Mechanical specification

dimensions in mm unless otherwise stated

<i>Dimension</i>		<i>Part number</i>
<b>A</b>	59	
<b>B</b>	71 nominal	
<b>ØC</b>	Ø14 medium straight knurled cap	
<b>D</b>	0.4 nominal	
<b>ØE</b>	Ø2.54 Pole Piece	
<b>ØT</b>	3/8" x 24 tpi UNF-2A	<b>MPU1159HTX-I</b>
<b>or</b>	M10 x 1.0 6g	<b>MPU1159HTX-M</b>
<b>Main body material</b>	Stainless Steel	
<b>End Bobbin face</b>	Glass Filled Nylon	
<b>Locknut</b>	1 off supplied as standard	

mpu1159HTX full v1.2 01/2020

# Electrical specification

**Resistance** 900Ω nominal @ 20°C

**Inductance** 235mH nominal

**Polarity** White lead is positive with respect to Black lead as target approaches

**Operating temperature range** -54°C to +125°C

**Voltage output** 20V peak-peak [see note 1]

**Minimum speed** 30mm/second [see note 2]

**Termination** Twin Raychem Type 100 0.5mm<sup>2</sup> low halogen leads encased in interwoven braid screen with low smoke zero halogen overall sheath x 2 metres

## Notes:

1. Nominal output is a typical peak to peak voltage measured across a 10K load using a 60 tooth mild steel gear wheel of Ø6", rotating at 1000 rpm and with an air gap setting of 0.01".
2. Minimum speed in mm/second to generate 100mV peak to peak typical output under standard test conditions as in note 1.

*Reliability, Guaranteed*



**Logitech Electronics Limited**

**MADE IN THE UK**

mpu1159HTX full v1.2 01/2020

**sensorMATIC**  
SPECIALIST&SOLUTIONS

Sensormatic srl - Via della Beverara 13 - 40131 Bologna  
Tel. +39 051 63 53 511 - smbox@sensormatic.it - www.sensormatic.it