

LED Work Light

CWF



CE	RoHS 10	UL	FCC	KC	IP20	Indoor Use
Mounting in All Directions	Ambient Temperature -25°C~+60°C (DC model)	Ambient Temperature -20°C~+50°C (AC model)	Daylight			

Model Number Configuration

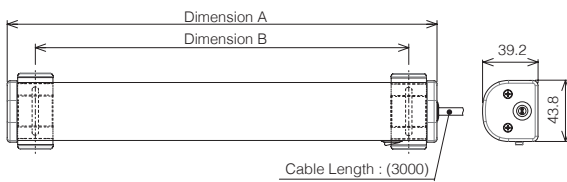
CWF3S-24-CD



- ① Length
3 = 300mm
6 = 600mm
9 = 900mm*1
 - ② Rated Voltage / Standards
24 = 24V DC / UL, CE*2
M2U = 100-240V AC / UL
M2C = 100-240V AC / CE, KC
 - ③ Luminous Color
CD = Daylight
- *1.AC Type only *2.CWF [3S][6S] type only

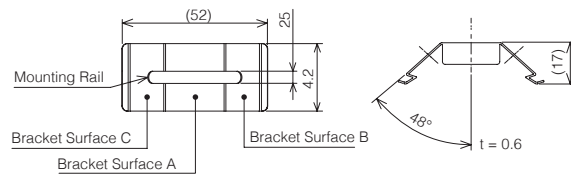
Dimensions (mm)

LED Work Light



Model Number	Dimension A	Dimension B
CWF3S-□-CD	300	260
CWF6S-□-CD	600	560
CWF9S-□-CD	900	860

CWF Standard Mounting Bracket (2 pcs)



Optional Parts

For details refer to P. 99 to P. 104

Product Description	Model Number
Swivel Bracket	CWF-001
Magnetic Mounting Bracket	CWF-002

Specification

Description	Voltage Type	Length		
		300mm	600mm	900mm
Illuminance (@1m, center, typical)	DC	165lx	320lx	-
	AC	150lx	320lx	445lx

Product List

Model Number	Rated Voltage	Luminous Color	Power Consumption	Mass
CWF3S-24-CD	24V DC	Daylight	5W	0.42kg
CWF6S-24-CD	24V DC	Daylight	10W	0.57kg
CWF3S-M2U-CD	100-240V AC	Daylight	5W	0.53kg
CWF3S-M2C-CD	100-240V AC	Daylight	5W	0.46kg
CWF6S-M2U-CD	100-240V AC	Daylight	10W	0.68kg
CWF6S-M2C-CD	100-240V AC	Daylight	10W	0.6kg
CWF9S-M2U-CD	100-240V AC	Daylight	15W	0.84kg
CWF9S-M2C-CD	100-240V AC	Daylight	15W	0.75kg

CLA-A

CE
RoHS 10
UL
IP66
IP67
IP69K
Indoor Use
Mounting in All Directions

Daylight Amber
Ambient Temperature -40°C - +60°C



CLA-CD (Daylight: 6800K)



CLA3S-24A-Y (Amber)

Model Number Configuration

CLA1S-24A-CD-30

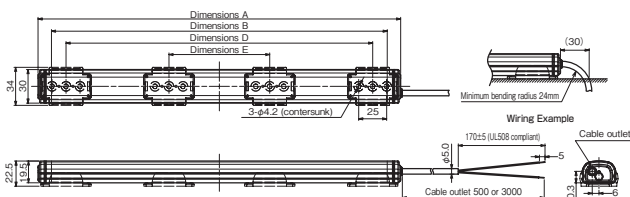
①

②

③

- ① Length
1 = 100 mm
2 = 200 mm
3 = 300 mm
6 = 600 mm
9 = 900 mm
12 = 1200 mm
- ② Luminous Color
CD = Daylight
Y = Amber
* -Y: 300mm only
- ③ Cable Length
Blank = 0.5m
30 = 3.0m

Dimensions (mm)



Model	Dimension A	Dimension B	Dimension D	Dimension E	Number of Brackets Included (SZ-310AR)
	Full Length	Length of Illuminated Area	Recommended Mounting Pitch		
CLA1S-	124	100	74	—	2
CLA2S-	224	200	174	—	2
CLA3S-	324	300	274	—	2
CLA6S-	624	600	574	—	2
CLA9S-	924	900	874	290	4
CLA12S-	1224	1200	1174	390	4

Optional Parts

For details refer to P. 99 to P. 104

Product Description	Model Number
Rear mounting (M4 screws not included)	SZ-310AR
Rear mounting (Magnetic)	SZ-310ARM
Side mounting (M4 screws not included)	SZ-310AS
Side mounting (M4 screws not included)	SZ-310ASB (Compatible with CLB-24N series)
Steel rear mounting bracket (Screws not included)	SZ-310EU

Note: Take care to prevent the magnet (SZ-310ARM) from falling. Use screw-on type brackets for permanent installations.

Specification

Description	Distance	Length of Illuminated Area						
		100mm	200mm	300mm (CD)	300mm (Y)	600mm	900mm	1200mm
Illuminance (Center, typical)	At 0.3m	-	-	-	-	1,425lx	1,575lx	1,600lx
	At 0.5m	140lx	270lx	400lx	220lx	650lx	810lx	890lx
	At 1.0m	35lx	70lx	105lx	60lx	200lx	280lx	340lx

Product List

Model Number	Length of Illuminated Area	Luminous Color	Rated Voltage	Cable Length	Power Consumption	Mass (0.5m Cable)	Mass (3.0m Cable)
CLA1S-24A-CD(-30)	100mm	Daylight	24V DC	0.5m / 3.0m	2.5W	0.08kg	0.165kg
CLA2S-24A-CD(-30)	200mm	Daylight	24V DC	0.5m / 3.0m	5W	0.13kg	0.215kg
CLA3S-24A-CD(-30)	300mm	Daylight	24V DC	0.5m / 3.0m	5.7W	0.18kg	0.265kg
CLA3S-24A-Y	300mm	Amber	24V DC	0.5m	5.7W	0.18kg	-
CLA6S-24A-CD(-30)	600mm	Daylight	24V DC	0.5m / 3.0m	11.6W	0.34kg	0.425kg
CLA9S-24A-CD(-30)	900mm	Daylight	24V DC	0.5m / 3.0m	17.3W	0.5kg	0.585kg
CLA12S-24A-CD(-30)	1200mm	Daylight	24V DC	0.5m / 3.0m	23W	0.66kg	0.745kg

LED Work Light

CWA

CE

RoHS
10

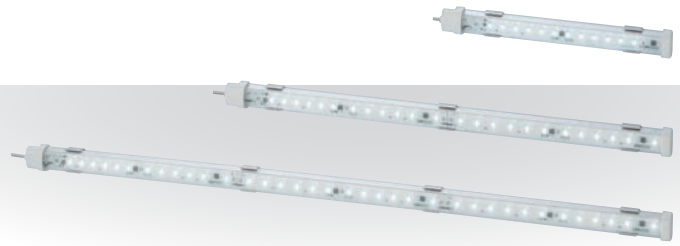
UL

FCC

IP65

Indoor
UseMounting in
All
DirectionsAmbient
Temperature
-20°C~+60°C

Daylight



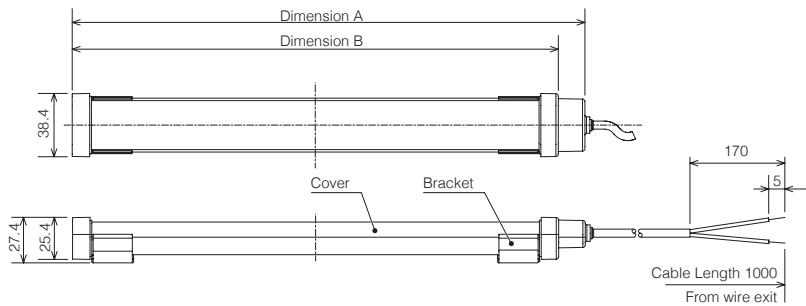
Model Number Configuration

CWA3S-24-CD

① ② ③ ④

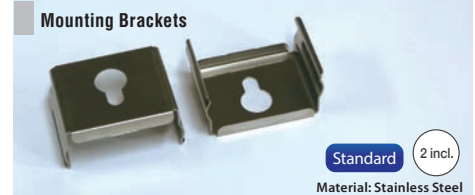
- ① Length
3 = 300mm
6 = 600mm
9 = 900mm
- ② Connector
S = Side-exiting Cable
- ③ Rated Voltage
24 = 24V DC
- ④ Luminous Color
CD = Daylight

Dimensions (mm)



Model Number	Dimension A	Dimension B
CWA3S-24-CD	315.5mm	300mm
CWA6S-24-CD	621.0mm	600mm
CWA9S-24-CD	916.5mm	900mm

Mounting Brackets



Holding Brackets



Specification

Description	Length		
	300mm	600mm	900mm
Illuminance (@1m, center, typical)	110lx	220lx	330lx

Product List

Model Number	Rated Voltage	Luminous Color	Power Consumption	Mass
CWA3S-24-CD	24V DC	Daylight	5W	0.215kg
CWA6S-24-CD	24V DC	Daylight	10W	0.37kg
CWA9S-24-CD	24V DC	Daylight	15W	0.53kg

Product List

Model Number	Rated Voltage	Length of Illuminated Area	Body Material	Lens	Wiring Type	Luminous Color	Power Consumption	Mass
CLK3CL-24SG-CD	24V DC	300mm	Stainless steel	Tempered glass	M12 connector Daisy link	Daylight	12.5W	1.490kg
CLK6C-24AG-CD	24V DC	600mm	Aluminum	Tempered glass	M12 connector	Daylight	25W	1.222kg
CLK6CL-24AG-CD	24V DC	600mm	Aluminum	Tempered glass	M12 connector Daisy link	Daylight	25W	1.222kg
CLK2S-24AAG-CD	24V DC	200mm	Aluminum	Tempered glass	0.5m cable	Daylight	8.4W	0.526kg
CLK3S-24AAG-CD/CN	24V DC	300mm	Aluminum	Tempered glass	0.5m cable	CD: Daylight CN: Natural white	12.5W	0.676kg
CLK6S-24AAG-CD	24V DC	600mm	Aluminum	Tempered glass	0.5m cable	Daylight	25W	1.222kg

Optional Parts

For details refer to P. 99 to P. 104

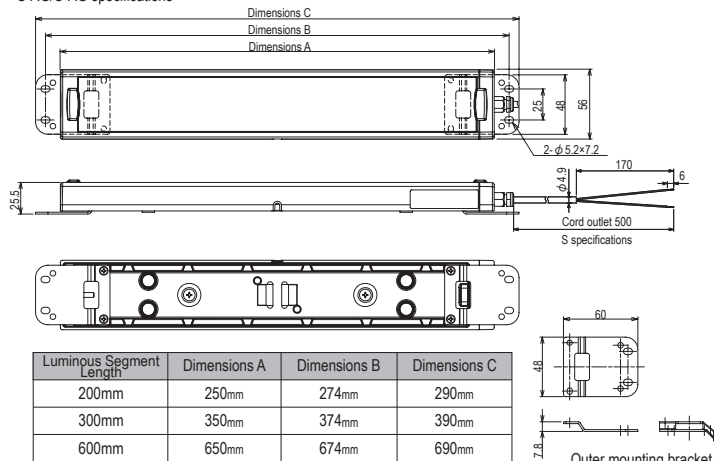
Product Description	Model Number
Outer mounting bracket	CLK-001
Swivel bracket	SZ-320KS (1 pair)

Specification

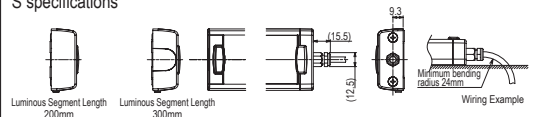
Description	Distance	Luminous Segment Length		
		200mm	300mm	600mm
Illuminance (Center, typical)	At 1.0m	820lx	1,200lx	2,100lx
	At 2.0m	200lx	300lx	580lx

Dimensions (mm)

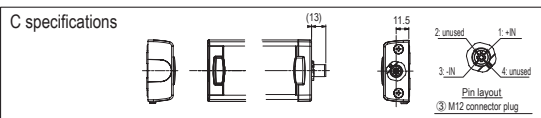
S-AG/C-AG specifications



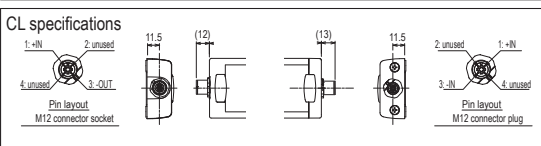
S specifications



C specifications

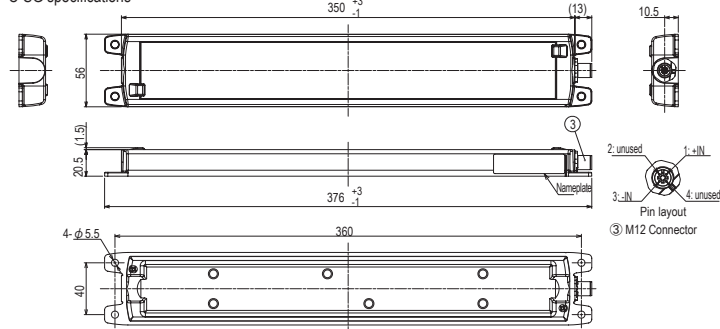


CL specifications



Caution
Please waterproof and oil-proof the end of the cable if it will come in contact with water or be in a low temperature environment.

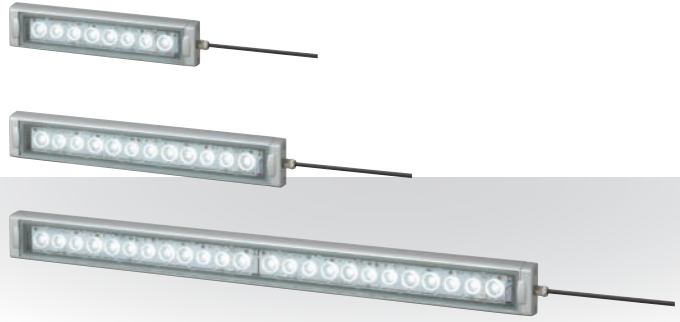
C-SG specifications



LED Work Light

CWK

CE	RoHS 10	UL	FCC	IP66G	IP67G	Indoor Use
Mounting in All Directions	Ambient Temperature -10°C--50°C	Daylight				



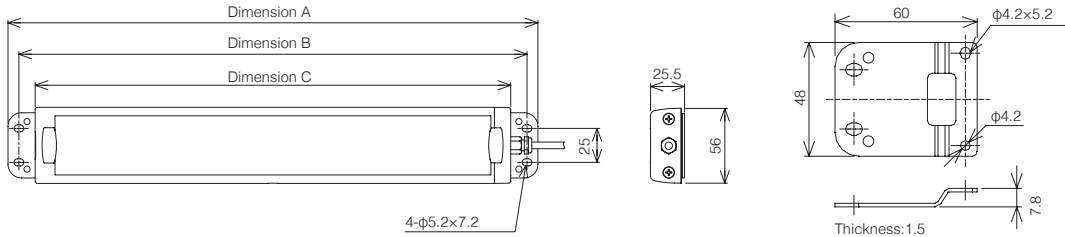
Model Number Configuration

CWK2S-24-CD



- ① Length
2 = 200mm
3 = 300mm
6 = 600mm
- ② Connector Type
S = Side-exiting Cable
- ③ Rated Voltage
24 = 24V DC
- ④ Luminous Color
CD = Daylight

Dimensions (mm)



Model Number	Dimension A	Dimension B	Dimension C
	Overall Length	Mounting Pitch	Body Length
CWK-2S-24-CD	290mm	274mm	250mm
CWK-3S-24-CD	390mm	374mm	350mm
CWK-6S-24-CD	690mm	674mm	650mm

Optional Parts

For details refer to P. 99 to P. 104

Product Description	Model Number
Swivel Bracket	SZ-320KS (1 pair)

Specification

Description	200mm	300mm	600mm
Illuminance (@1m, center, typical)	600lx	850lx	1500lx

Product List

Model Number	Rated Voltage	Luminous Color	Power Consumption	Mass
CWK2S-24-CD	24V DC	Daylight	8.64W	0.6kg
CWK3S-24-CD	24V DC	Daylight	11.52W	0.75kg
CWK6S-24-CD	24V DC	Daylight	23.04W	1.23kg

LED Work Light

CLN-A

CE
RoHS 10
UL
IP66G
IP67G
IP69K
Indoor Use

Mounting in All Directions
Ambient Temperature -40°C~+60°C
Daylight

Tilt Type

Pan/Tilt Type



Model Number Configuration

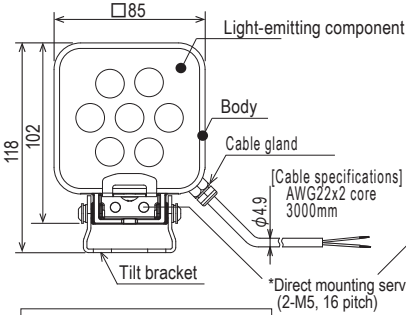
CLN-24A-CD-T

①

① Mounting
T = Tilt Type
PT = Pan/Tilt Type

Dimensions (mm)

■ Tilt only (T type)



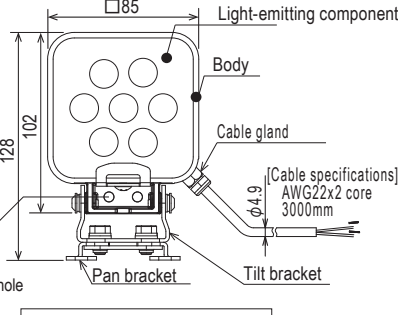
Mounting pitch (2-M6, 26 pitch)

■ Tilt only (T type)



Can tilt 180° and can be folded to 33mm for easier installation.

■ Pan/Tilt (PT type)



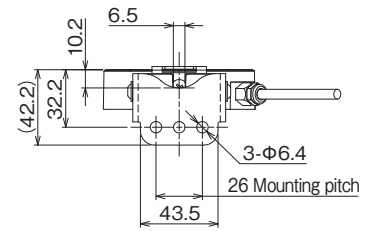
Mounting pitch (2-M6, 45 pitch)

■ Pan & Tilt (PT type)

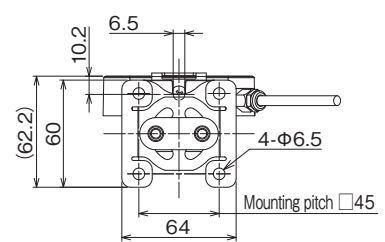


Can tilt 180° or rotated 120° to fit any application. Can be folded to 43mm for easier installation.

Mounting dimensions (T type)



Mounting dimensions (PT type)



Product List

Model Number	Rated Voltage	Luminous Color	Power Consumption	Mass
CLN-24A-CD-T	24V DC	Daylight	4.2W	0.39kg
CLN-24A-CD-PT	24V DC	Daylight	4.2W	0.46kg

Specification

Description	Distance	
Illuminance (Center, typical)	At 1.0m	820lx
	At 2.0m	200lx

LED Work Light

CLE

- CE
- RoHS 10
- IP65F
- Indoor/Outdoor Use
- Mounting in All Directions
- Ambient Temperature -25°C~+60°C



CLE-24 (Wide Angle Type)



CLE-24N (Narrow Angle Type)

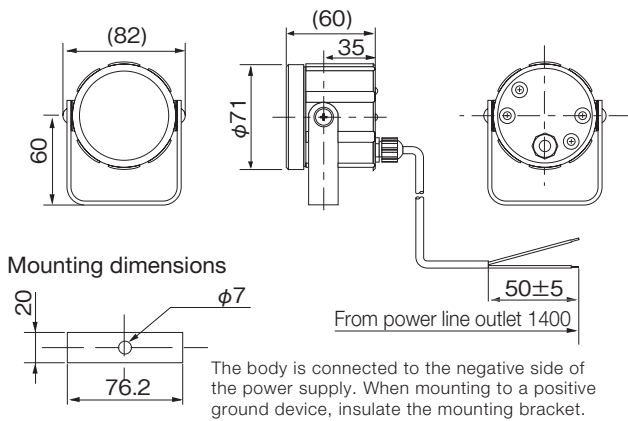
Model Number Configuration

CLE-24N

① ②

- ① Rated Voltage
24 = 24V DC
- ② Irradiation Type
Blank = Wide Angle Type
N = Narrow Angle Type

Dimensions (mm)



Specification

Luminous Intensity	Blank: 25cd or more N: 160cd or more
---------------------------	---

Product List

Model Number	Lens	Rated Voltage	Power Consumption	Mass
CLE-24	Translucent	24V DC	1.3W	0.3kg
CLE-24N	Clear (narrow angle type)	24V DC	1.3W	0.3kg